

# Logistics

*River, road, rail and runway connecting global markets...*

- **No. 1 busiest cargo airport in North America**
- **More than 2 million packages** processed per day at UPS Worldport

As a city founded on the banks of the Ohio River in 1778, Louisville has long been a leading logistics hub. Today, we are strategically located at a 21st century crossroads with river, road, rail, and runway. Combined unrivaled access to the interstate system and daily overnight flights to more than 25 countries through UPS Worldport, companies located here can provide best-of-class supply chain and logistics service to customers around the world.

- UPS Worldport is the **largest automated package sorting facility in the world**, processing more than 400,000 packages per hour.
- Three major interstates (**I-64, I-65, I-71**) intersect in Louisville, providing coast-to-coast connectivity.
- Louisville is home to UPS Worldport at Louisville Muhammad Ali International Airport, a **Top 5 busiest cargo airport in the world**.
- Home to **2 public inland ports with 41 private port terminals** on the Ohio River.



On the importance of a critical logistics hub:

“ Relocating our headquarters to Louisville is more than coming home, it’s a chance to help shape the city’s future as a center for innovation ... Our platform was built for the industries that keep America moving, and Louisville gives us the support, talent and partnerships to scale that mission even further.

— **Buddy Bockweg**, Founder & CEO, Vsimple



ONE LOUISVILLE



Logistics companies in Louisville:



Lineage



Lantech



vsimple

amazon

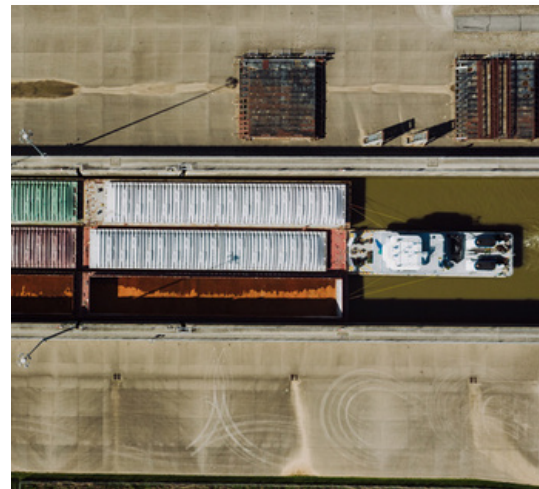
# Logistics



ONELOUISVILLE

Louisville is at the center of America's logistics infrastructure and has made significant investments to ensure companies located in Bourbon City can ship their goods and products anywhere in the world.

From major interstate connectivity with I-64, I-65, and I-71 to the ability to utilize the Ohio and Mississippi Rivers to facilitate trade and commerce, Louisville's logistics network is multifaceted. In 2025, **Norfolk Southern-Union Pacific** and **CSX-BNSF added new intermodal transcontinental rail service** originating in Louisville. Companies based in Louisville can also take advantage of Louisville Riverport Authority's **Foreign Trade Zone** designation.



## Getting goods from here to there has never been easier.

Located at Louisville Muhammad Ali International Airport, UPS Worldport is the beating heart of our city. Louisville and UPS are going above and beyond to grow and nurture the light manufacturing, biotech and medical logistics industry.

Pharmaceutical companies operate in temperature-controlled spaces where medical lab testing can be prioritized and expedited, and the health-certified distribution centers can ship within hours with unsurpassed end-of-runway capacity. Car and truck parts, medical devices, and personalized medicine can be manufactured and shipped for just-in-time delivery. Defense and aerospace companies have access to secure, inland manufacturing capacity, while Louisville's position as an increasingly competitive smart/autonomous logistics hub creates significant potential for efficiency gains across sectors.

From Louisville, companies can **reach more than 200 countries and territories within 24 hours** via more than 300 daily cargo flights.



ONELOUISVILLE

**One Louisville** is a 501(c)(6) nonprofit organization and the official economic development organization and regional chamber of commerce for the Louisville, Kentucky region. One Louisville's mission is to accelerate economic growth across the Louisville region through new investment, talent development, and expanded opportunity for all.

For more information, visit: [onelouisville.org](https://onelouisville.org).